

BOXER S RM MINI

SERIES

10 kVA

3:3
PHASE

3:1
PHASE

ONLINE UPS



DATA CENTER



MEDICAL



INDUSTRY



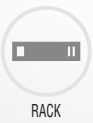
TRANSPORT



EMERGENCY



UPS ONLINE



RACK



POWER FACTOR



SERVICE

FEATURES

- High Frequency and True Double-Conversion
- DSP (Digital Signal Processors) Technology
- Input Power Factor Correction (PFC)
- Output Power Factor 0.9
- Cold Start
- Auto Sensing Frequency
- ECO Mode Operation for Energy Saving
- Selectable Output Voltage via LCD
- 50Hz/60Hz Frequency Converter Mode Available
- Selectable Battery Low Voltage via LCD
- Power-On Self Test
- Advanced Battery Management (ABM)
- Short Circuit and Overload Protection
- Automatically Charging Battery at UPS Off Mode
- Fan Speed Auto Control when Load Varies
- Generator Compatible
- Emergency Power Off (EPO)
- Standard RS232 Communication Port
- SNMP Communication Port (Optional)
- Extension Battery Bank (Optional)



The BOXER Series is attested by Bureau Veritas with regard to performance (EN 62040-3)

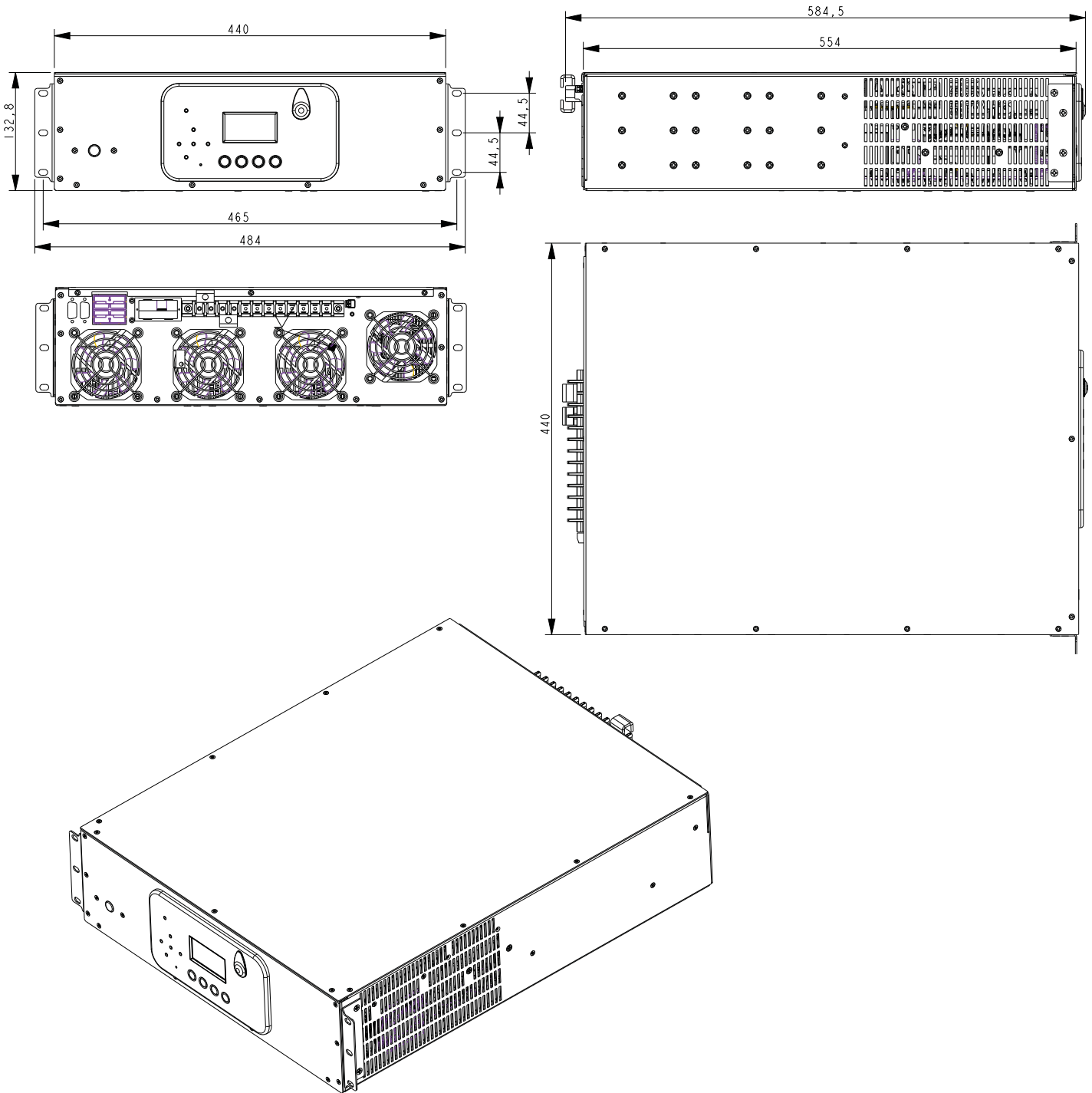


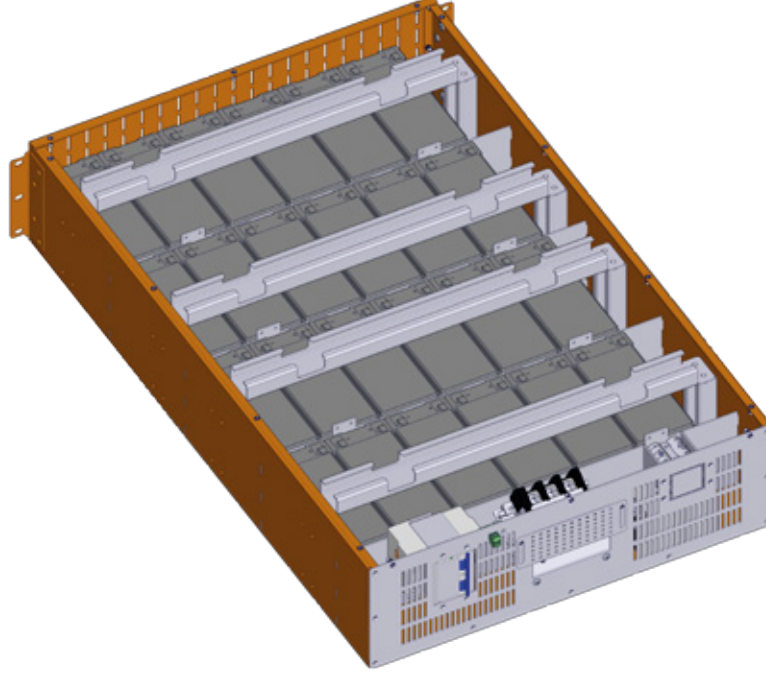
POWER
FORLIFE

Aytemiz
MAKELSAN
Uninterruptible Power Supplies

MODEL	
Capacity	10kVA / 9kW
INPUT	
Related Voltage	380 / 400 / 415 VAC, -%18 +%15, (3P+N+PE)
Frequency Range	45-65 Hz
Power Factor	≥0,99
Bypass Frequency Range	50-60 Hz ±10%
Harmonic Distortion	≤3% (100% Non-Linear Load)
ECO Range	Max. Voltage: 220V: +25% (Optional +10%, +15%, +20%), 230V: +%20 (Optional +10%, +15%), 240V: +15% (Optional +10%) Min. Voltage: -45% (Optional -20%, -30%)
Generator	Compatible
OUTPUT	
Voltage Range	220 / 230 / 240 VAC 1P + N + PE
Power Factor	0,9
Voltage Regulation	± 1% Static, ± 1% Dynamic
Frequency	AC Mode 50/60 Hz ±1% Battery Mode 50Hz ±0,1%
Waveform	Pure Sinewave
Crest Factor	3:1
Harmonic Distortion	≤2% (Linear Load) ≤5% (Non-Linear Load)
Transfer Time	Battery Mode to Inverter Mode 0ms, Inverter to Bypass Mode 0ms
Output Dynamic Tolerance	At 100% Load ±5%
Overload Capability AC Mode	≤110%: 60min, ≤125%: 10min, ≤150%: 1min, ≥150% turn to Bypass Mode Immediately
Parallel Operation	Optional
EFFICIENCY	
AC Mode	93,5%
Battery Mode	92,5%
ECO Mode	98%
BATTERY	
DC Voltage	192V-480V
Battery Quantity 12V	16-40
Charge Current	5A
Typical Recharge Time	8 hour
PROTECTION	
Full Protection	Overload, Short Circuit ve Battery Charge-Discharge Protection, RFI/EMI Filter
SYSTEM FEATURES	
Charge Current	Smart Charging System
Over-temperature	Line Mode: Turn to Bypass; Backup Mode: Shut Down UPS Immediately
Intelligent Alarm System	Line Failure, Low Battery, Overload, System Failure
LED&LCD Monitor	Line Mode, Battery Mode, Bypass Mode, Battery Low, Overload & UPS Fault
ALARM	
Utility Failure	Line Mode, Low Battery, Overload, System Fault
Battery Low	Alarm and Shut Down
Overload	Overload
UPS Fault	System Fault
ENVIRONMENTAL	
Operation Temperature	For UPS 0~40°C (For Battery 0~25°C)
Storage Temperature	For UPS -15~45°C (For Battery -10~60°C)
Humidity	0%~95%
Protection Class	IP20
Altitude	<1000m Correction Factor 1 / <2000m Correction Factor >0.92 / <3000m Correction Factor >0.84
Noise Level	<50 dB
Cabinet	Anti-Static Paint Protected
Event Log	1500 Real Time Event Log with Detailed Parameters (Status Menu Saved)
Paralleling	Parallel Configuration up to 8 Units
EPO (Emergency Power Off)	Standard
Isolation Transformer	Optional
COMMUNICATION	
Communication Interface	RS232, SNMP (Optional)
Cold Start	Optional
Protocol	SEC, TELNET
STANDARDS	
Quality	ISO 9001
LVD / Safety	IEC/EN62040-1, IEC/EN60950-1
EMC	EC 62040-2
DIMENSIONS & WEIGHT	
	10kVA
Dimensions WxDxH (mm)	440 x 585 x 133
Net Weight (kg)	28

Aytemiz-Makelsan reserves the right to change or modify product design, construction, specifications, or materials without prior notice and without incurring any obligation to make such changes and modifications on Aytemiz-Makelsan products previously or subsequently sold. Aytemiz-Makelsan does not guarantee the items of the accuracy and completeness.





MODEL	
Capacity	10kVA / 9kW
Battery Capacity	16 x 12Ah veya 20 x 7-9Ah
Fuse	Internal NH and Breaker Protection Fuse Division
Protection Class	IP20
Connection	Terminal or SB50 Connection Terminal
Dimensions WxDxH (mm)	484 x 703.5 x 131.25
Net Weight (kg)	14
Max Net Weight Incl. Battery (kg)	68

Aytemiz-Makelsan reserves the right to change or modify product design, construction, specifications, or materials without prior notice and without incurring any obligation to make such changes and modifications on Aytemiz-Makelsan products previously or subsequently sold. Aytemiz-Makelsan does not guarantee the items of the accuracy and completeness.