

BOXER S RM

SERIES

10/15/20 kVA

3:3
PHASE

3:1
PHASE

ONLINE UPS



DATA CENTER



MEDICAL



INDUSTRY



TRANSPORT



EMERGENCY



UPS ONLINE



RACK



POWER FACTOR



SERVICE

FEATURES

- High Frequency and True Double-Conversion
- DSP (Digital Signal Processors) Technology
- Input Power Factor Correction (PFC)
- Output Power Factor 0.9
- Cold Start *(Optional)*
- Auto Sensing Frequency
- ECO Mode Operation for Energy Saving
- Selectable Output Voltage via LCD
- 50Hz/60Hz Frequency Converter Mode Available
- Selectable Battery Low Voltage via LCD
- Power-On Self Test
- Advanced Battery Management (ABM)
- Short Circuit and Overload Protection
- Automatically Charging Battery at UPS Off Mode
- Fan Speed Auto Control when Load Varies
- Generator Compatible
- Emergency Power Off (EPO)
- Standard RS232 Communication Port
- SNMP Communication Port *(Optional)*
- Extension Battery Bank *(Optional)*
- Dry Contact *(Optional)*
- Modbus *(Optional)*



The BOXER Series is attested by Bureau Veritas with regard to performance (EN 62040-3)

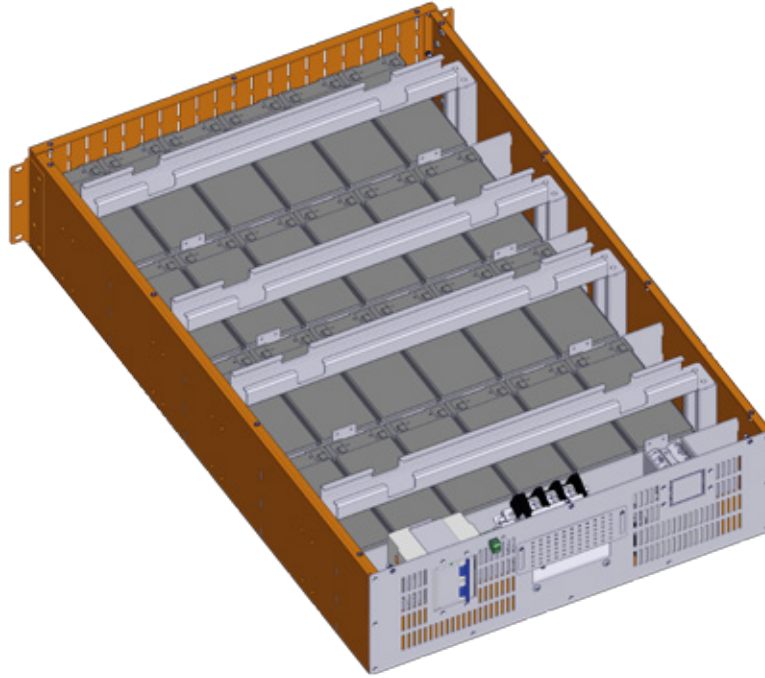


POWER
FORLIFE

Aytemiz
MAKELSAN
Uninterruptible Power Supplies

MODEL				
Capacity		10kVA / 9kW	15kVA / 13,5kW	20kVA / 18kW
INPUT				
Related Voltage		380 / 400 / 415 VAC, -%18 +%15, (3P+N+PE)		
Frequency Range		45-65Hz		
Power Factor		≥0,99		
Bypass Frequency Range		50-60 Hz ±10%		
Harmonic Distortion		≤3% (100% Non-Linear Load)		
ECO Range		Max. Voltage: 220V: +25% (Optional +10%, +15%, +20%), 230V: +20% (Optional +10%, +15%), 240V: +15% (Optional +10%) Min. Voltage: -45% (Optional -20%, -30%)		
Generator		Compatible		
OUTPUT				
Voltage Range		380V / 400V / 415 VAC (3Ph+N+PE), Optional (220V / 230 / 240 1Ph+N+PE)		
Power Factor		0.9		
Voltage Regulation		± 1% Static, ± 1% Dynamic		
Frequency	AC Mode	±1%, ±2% , ±4%, ±5%, ±10% (Optional)		
	Battery Mode	50/60 ± 0.1 Hz		
Waveform		Pure Sinewave		
Crest Factor		3:1		
Harmonic Distortion		≤2% (Linear Load) ≤5% (Non-Linear Load)		
Transfer Time		Battery Mode to Inverter Mode 0ms, Inverter to Bypass Mode 0ms		
Output Dynamic Tolerance		At 100% Load ±5%		
Overload	AC Mode	≤110%: 60min.; ≤125%: 10min.; ≤150%: 1min. ≥150% turn to Bypass Mode Immediately		
Capability	Battery Mode	>150% Bypass Mode		
Parallel Operation		Optional		
EFFICIENCY				
AC Mode		93,5%	94,5%	
Battery Mode		92,5%	93,5%	
ECO Mode		98%		
BATTERY				
DC Voltage		240-480 VDC	360-480 VDC	360-480 VDC
Battery Quantity 12V		20-40	30-40	30-40
Charge Current		5A		
Typical Recharge Time		8 hour		
PROTECTION				
Full Protection		Overload, Short Circuit ve Battery Charge-Discharge Protection, RFI/EMI Filtre		
SYSTEM FEATURES				
Charge Current		Smart Charging System		
Over-temperature		Line Mode: Turn to Bypass; Backup Mode: Shut Down UPS Immediately		
Intelligent Alarm System		Line Failure, Low Battery, Overload, System Failure		
LED&LCD Monitor		Line Mode, Battery Mode, Bypass Mode, Battery Low, Overload & UPS Fault		
ALARM				
Utility Failure		Line Mode, Low Battery, Overload, System Fault		
Battery Low		Alarm and Shut Down		
Overload		Overload		
UPS Fault		System Fault		
ENVIRONMENTAL				
Operation Temperature		0°C~40°C		
Storage Temperature		-25°C~55°C		
Humidity		0%~90%		
Altitude		<1500 m		
Noise Level		<50 dB		
COMMUNICATION				
Communication Interface		RS232, RS485, Parallel Port, Dry Contact (Optional), SNMP (Optional), Cold Start (Optional)		
Software		SEC, TELNET		
Emergency Power Off (EPO)		Standard		
STANDARDS				
Safety		IEC/EN62040-1, IEC/EN60950-1		
EMC		IEC/EN62040-2, IEC61000-4-2, IEC61000-4-3, IEC61000-4-4, IEC61000-4-5, IEC61000-4-6, IEC61000-4-8		
DIMENSIONS & WEIGHT		10kVA	15kVA	20kVA
Dimensions WxDxH (mm)		484x720x132,5		
Net Weight (kg)		30	31	34

Aytemiz-Makelsan reserves the right to change or modify product design, construction, specifications, or materials without prior notice and without incurring any obligation to make such changes and modifications on Aytemiz-Makelsan products previously or subsequently sold. Aytemiz-Makelsan does not guarantee the items of the accuracy and completeness.



MODEL		
Capacity	10kVA / 9kW	
INPUT		
Battery Capacity	16 x 12Ah or 20 x 7/9Ah	
Fuse	Internal NH and Breaker Protection Fuse Division	
Protection Class	IP20	
Connection	Terminal or SB50 Connection Terminal	
Dimensions WxDxH (mm)	484 x 703.5 x 131.25	
OUTPUT	7 Ah	9 Ah
Net Weight (kg)	14	
Max Net Weight Incl. Battery (kg)	68	

Aytemiz-Makelsan reserves the right to change or modify product design, construction, specifications, or materials without prior notice and without incurring any obligation to make such changes and modifications on Aytemiz-Makelsan products previously or subsequently sold. Aytemiz-Makelsan does not guarantee the items of the accuracy and completeness.

