

LION / LION X

SERIES

650-2200 VA

LINE INTERACTIVE UPS



LION SERIES



LION X SERIES



FEATURES

LION / LION X SERIES FEATURES

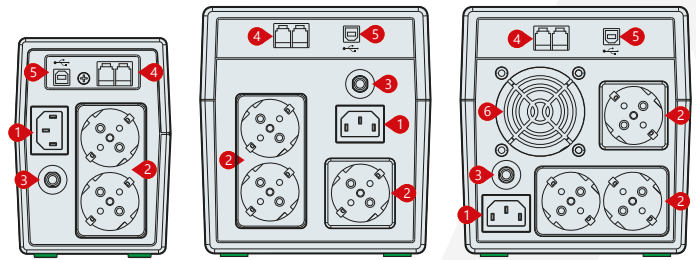
- LED Display (650-850)
- LCD Display (1200-1500-2200)
- Microprocessor-Based Digital Control
- Automatic Voltage Stabilization
- Automatic Breaker
- Frequency Adaptive
- User Friendly Alarm System
- Cold Start
- Auto Restart while AC is Recovering
- Simulated Sine Wave Output
- Intelligent Battery Management
- Short Circuit and Over Discharged Protection
- Automatically Charging Battery at UPS Off Mode
- USB Communication Port
- RJ11/RJ45 Protection

+ LION SERIES FEATURES

- Voltage Range, Operation Mode, Battery Charge and Load Quantity Monitoring via LCD Display (1200-1500-2200)

LION SERIES DETAILS

- | | | |
|-------------|--------------|--------|
| 1. AC Input | 3. Breaker | 5. USB |
| 2. Outlet | 4. RJ11/RJ45 | 6. Fan |



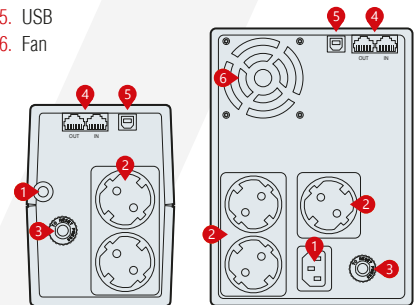
Rear Panel
650-850 VA

Rear Panel
1200-1500 VA

Rear Panel
2200 VA

LION X SERIES DETAILS

- | | | |
|-------------|--------------|--------|
| 1. AC Input | 3. Breaker | 5. USB |
| 2. Outlet | 4. RJ11/RJ45 | 6. Fan |



Rear Panel
650-850 VA

Rear Panel
1200-2200 VA



MODEL	LION SERIES					LION X SERIES				
CAPACITY	650VA/390W	850VA/510W	1200VA/720W	1500VA/900W	2200VA/1320W	650VA/390W	850VA/510W	1200VA/720W	1500VA/900W	2200VA/1320W
INPUT										
Related Voltage	220 VAC									
Voltage Range	170-280 VAC (±5%)					162-290 VAC				
Frequency	50 Hz (±10%)					50-60 Hz (Auto Sensing)				
OUTPUT										
Voltage Range	220 VAC									
Voltage Precision	±10% (Battery Mode)									
Frequency	50 / 60 Hz ±1% (Battery Mode)									
Transfer Time	2-6ms Typical, 10ms max.					4ms Typical				
Waveform	Modified Sine Wave (Battery Mode)									
Overload	AC Mode					>(110% ±10%) After 1min Alarm go to Fault Mode >(120% ±10%) Immediately go to Fault Mode				
	Battery Mode					>(110% ±10%) After 1min Alarm go to Fault Mode >(120% ±10%) Immediately go to Fault Mode				
EFFICIENCY										
Line Mode	Normal Mode: >95%, AVR Mode: >88%									
Battery Mode	>60%									
BATTERY										
Battery Configuration	1x12V/7Ah	1x12V/9Ah	2x12V/7Ah	2x12V/9Ah	2x12V/9Ah	1x12V/7Ah	1x12V/9Ah	2x12V/7Ah	2x12V/9Ah	2x12V/9Ah
Charge Current	1A									
Recharge/Charging Time	8 hours for Recharging up to 90% Capacity									
Backup Time	~16min	~20min	~30min	~50min	~50min	~16min	~20min	~30min	~50min	~50min
PROTECTION										
Full Protection	Overload, Short Circuit, Battery Charge-Discharge Protection									
INDICATION										
Display	LED		LCD			LED		LCD		
ALARM										
Battery Mode	Sounding every 10 seconds									
Low Battery	Sounding every 1 seconds									
Overload	Sounding every 0.5 seconds									
Fault	Continuously Sounding									
ENVIRONMENTAL										
Operating Temperature	0 ~ 40°C									
Storage Temperature	-20°C ~ 55°C									
Relative Humidity	0 - 90°C									
Audible Noise (at 1m)	≤40 dB					≤40 dB		≤45 dB		
COMMUNICATION										
Communication Port	USB									
Software	Windows Family / Linux / Mac									
DIMENSIONS	650VA	850VA	1200VA	1500VA	2200VA	650VA	850VA	1200VA	1500VA	2200VA
Dimensions WxDxH (mm)	101x298x142		150x353x162			96x286x138		148x298x178		
Pack. Dimensions WxDxH (mm)	142x332x213		192x405x235			146x323x202		193x335x247		

Aytemiz-Makelsan reserves the right to change or modify product design, construction, specifications, or materials without prior notice and without incurring any obligation to make such changes and modifications on Aytemiz-Makelsan products previously or subsequently sold. Aytemiz-Makelsan does not guarantee the items of the accuracy and completeness.