

# LION

SERIES

## 650-2200 VA

LINE INTERACTIVE UPS



UPS LINE  
INTERACTIVE



TOWER



PLUG & PLAY



USB



LCD DISPLAY  
(1200-1500-2200VA)

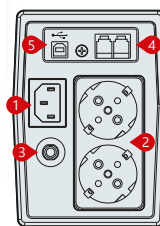


### FEATURES

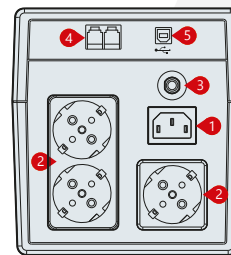
- LED Display (650-850)
- LCD Display (1200-1500-2200)
- Voltage Range, Operation Mode, Battery Charge and Load Quantity Monitoring via LCD Display (1200-1500-2200)
- Microprocessor-Based Digital Control
- Automatic Voltage Stabilization
- Automatic Breaker
- Frequency Adaptive
- User Friendly Alarm System
- Cold Start
- Auto Restart while AC is Recovering
- Simulated Sine Wave Output
- Intelligent Battery Management
- Short Circuit and Over Discharged Protection
- Automatically Charging Battery at UPS Off Mode
- USB Communication Port
- RJ11/RJ45 Protection

### DETAILS

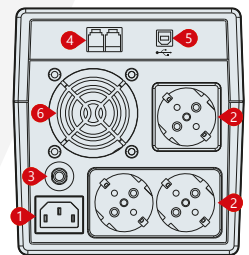
1. AC Input
2. Outlet
3. Breaker
4. RJ11/RJ45
5. USB
6. Fan



Rear Panel  
650-850 VA



Rear Panel  
1200-1500 VA



Rear Panel  
2200 VA



MODEL					
Capacity	650VA / 390W	850VA / 510W	1200VA / 720W	1500VA / 900W	2200VA / 1320W
<b>INPUT</b>					
Related Voltage	230 VAC				
Voltage Range	170-280 VAC (±%5)				
Frequency	50 Hz (±%10)				
<b>OUTPUT</b>					
Voltage Range	220 VAC / 230 VAC				
Voltage Precision	±10% (Battery Mode)				
Frequency	50 Hz ±%1 (Akü Modu)				
Transfer Time	2-6ms Typical, 10ms max.				
Waveform	Modified Sine Wave (Battery Mode)				
<b>EFFICIENCY</b>					
Line Mode	Normal Mode: >95%, AVR Mode: >88%				
Battery Mode	>60%				
<b>BATTERY</b>					
Battery Configuration	1 x 12V/7Ah	1 x 12V/9Ah	2 x 12V/7Ah	2 x 12V/9Ah	2 x 12V/9Ah
Charge Current	1A				
Recharge/Charging Time	6-8 hours for Recharging up to 90% Capacity				
Backup Time	~16 min.	~20 min.	~30 min.	~50 min.	~50 min.
<b>PROTECTION</b>					
Full Protection	Overload, Short Circuit, Battery Charge-Discharge Protection				
<b>INDICATION</b>					
Display	LED		LCD		
<b>ALARM</b>					
Battery Mode	Sounding every 10 seconds				
Low Battery	Sounding every 1 seconds				
Overload	Sounding every 0,5 seconds				
Fault	Continuously Sounding				
<b>ENVIRONMENTAL</b>					
Operating Temperature	0 ~ 40°C				
Storage Temperature	-20°C ~ 55°C				
Relative Humidity	0 - 95°C (Non Condensing)				
Audible Noise (at 1m)	≤40 dB				
<b>COMMUNICATION</b>					
Communication Port	USB				
Software	Windows Family / Linux / Mac				
<b>DIMENSIONS &amp; WEIGHT</b>	650VA	850VA	1200VA	1500VA	2200VA
Dimensions WxDxH (mm)	101 x 298 x 142		150 x 353 x 162		
Packaging Dimensions WxDxH (mm)	142 x 332 x 213		192 x 405 x 235		

Aytemiz-Makelsan reserves the right to change or modify product design, construction, specifications, or materials without prior notice and without incurring any obligation to make such changes and modifications on Aytemiz-Makelsan products previously or subsequently sold. Aytemiz-Makelsan does not guarantee the items of the accuracy and completeness.